



# Karen Human Rights Group

Documenting the voices of villagers in rural Burma

---

## Photo Set

February 7, 2014 / KHRG #14-2-PS1

---

### **Toungoo Photo Set: Ongoing militarisation and dam building consequences, March to April 2013**

*This Photo Set shows images of the Tatmadaw transporting rations and weapons in March 2013, during the ceasefire period, in the Kaw Thay Der area in Tantabin Township. This report also describes the efforts by the Burma government and the Shwe Swun In Company to provide reparations to villagers after their lands and bridge were flooded by Toh Boh dam operations. The photos show the construction of a road, being built to serve as an alternative route to the bridge, however, area villagers explain that the road was built carelessly and is unsafe. The photos also show a barge provided by the company to transport villagers and their motorbikes across the area where the bridge previously stood. The community member also reported that some of the Tantabin Township villagers who lost their lands received monetary compensation from the company or were allotted agricultural fields and seeds, while many villagers remain uncompensated.*

---

### **Photo Set | Tantabin Township, Toungoo District (March – April 2013)**

*The following photos were taken by a community member in Toungoo District who has been trained by KHRG to monitor human rights conditions. They are presented below, censored where necessary for security purposes.<sup>1</sup> The 10 photos below were received along with other information from Toungoo District, including 218 other photos and 44 video clips.<sup>2</sup>*

---

<sup>1</sup> KHRG trains villagers in eastern Burma to document individual human rights abuses using a standardised reporting format; conduct interviews with other villagers; and write general updates on the situation in areas with which they are familiar. When writing situation updates, villagers are encouraged to summarise recent events, raise issues that they consider to be important, and present their opinions or perspective on abuse and other local dynamics in their area.

<sup>2</sup> This Photo Set was compiled by KHRG office staff and is based on information from a community member from Toungoo District who has been trained by KHRG to monitor human rights conditions. In order to increase the transparency of KHRG methodology and more directly communicate the experiences and perspectives of villagers in eastern Burma, KHRG aims to make all field information received available on the KHRG website once it has been processed and translated, subject only to security considerations. For additional reports categorized by Type, Issue, Location and Year, please see the Related Readings component following each report on KHRG's redesigned Website.



The photos were taken on March 21<sup>st</sup> 2013 on the Kaw Thay Der vehicle road in Kaw Thay Der village, Tantabin Township, Toungoo District. The photos show Tatmadaw Light Infantry Division (LID) #66 soldiers transporting their military rations to Bu Hsa Hkee army camp. According to the community member who took these photos, a villager reported that they have seen the Tatmadaw transport a lot of their rations in their area. The community member noted that LID #66 soldiers have not only sent their rations to Bu Has Hkee, but have also sent two construction bulldozers. *[Photos: KHRG]*



The photos were taken on March 18<sup>th</sup> 2013 in Tantabin Township, Toungoo District, and show the vehicle road from Toungoo town to Hkler La village. The photos show the construction of a new road due to the destruction of a bridge in Pae Lae Wa that was flooded from Toh Boh dam operations led by the Shwe Swun In company. According to the community member, villagers in the area are despondent after the Shwe Swun In company built the new road carelessly. The villagers explained that the road is dangerous for them, as part of the road collapsed during the rainy season. *[Photos: KHRG]*



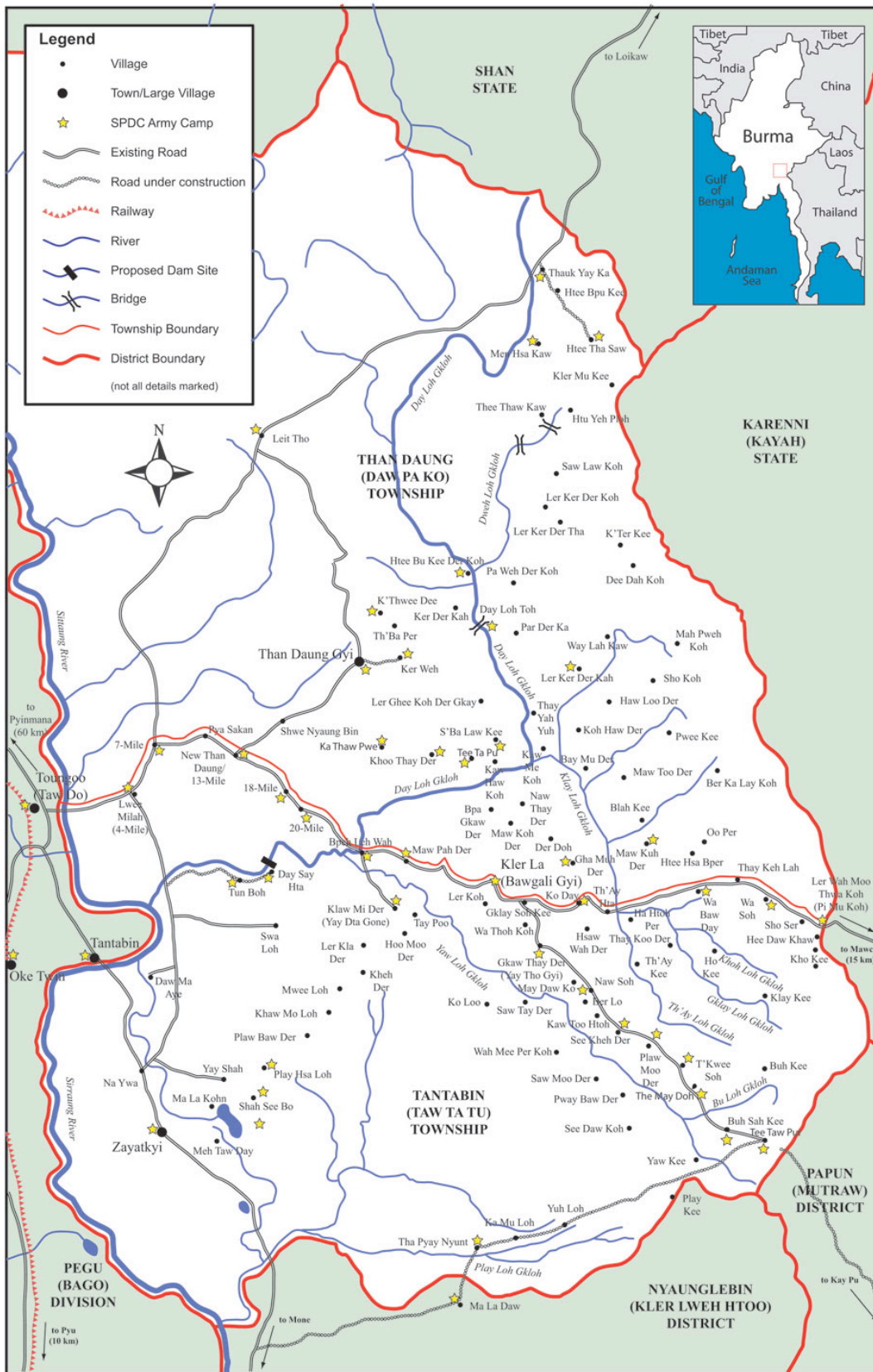
The photos were taken on March 29<sup>th</sup> 2013 in the Peh Leh Wa area, Tantabin Township, Toungoo District. The photos show the water reaching the western Day Lo area and Maw Nay Bgwa area. The Pae Lae Wa bridge was flooded during the construction of the Toh Boh dam, which was built by the Burma government in collaboration with the Shwe Swun In company. According to the community member, the company has a plan to repair the bridge but they have not started repairing it yet. As villagers can no longer drive over the bridge, the company provided a barge and hired drivers to transfer villagers' motorbikes between where they live and the places they need to travel in the area. The community member also reported that hundreds of acres of villagers' lands and plantations were flooded by the dam. However, some of the villagers were compensated for their lands and plantation fields or allotted different agricultural fields already, while many villagers are still waiting. [Photos: KHRG]

Further background reading on the situation in Toungoo District can be found in the following KHRG reports:

- Civilian and Military order documents: November 2009 to July 2013, (October 2013)
- "Toungoo Photo Set: Land confiscation and lack of educational opportunities in Than Daung Township, February 2012," (August 2013)
- Losing Ground: Land conflicts and collective action in eastern Myanmar, (March 2013)
- "Toungoo Situation Update: Tantabin and Than Daung Townships, September to December 2012," (March 2013)
- "Toungoo Interview: Saw H---, April 2011," (September 2012)



# Toungoo (Taw Oo) District



© Karen Human Rights Group (KHRG), 2006